

HARE KRISHNA ISKON
TEMPLE LAND

AREA STATEMENT :-

TOTAL PLOT AREA :- 1,13,965.92 SQ. FT

COND. AREA OF SINGLE STORED BLOCK :-

- 1. 30'-0" X 26'-3" = 787.50 SQ. FT.
- 2. 26'-3" X 134'-3" = 3524.06 SQ. FT.
- 3. 57'-6" X 26'-3" = 1515.93 SQ. FT.
- 4. 50'-3" X 26'-3" = 1319.06 SQ. FT.
- 5. 34'-3" X 26'-3" = 900.70 SQ. FT.
- 6. 38'-3" X 46'-6" = 1657.51 SQ. FT.
- 7. 41'-7" X 26'-3" = 1092.65 SQ. FT.

TOTAL AREA = 10,997.41 SQ. FT. (A)

COND. AREA OF DOUBLE STORED BLOCK :-

- 8. 33'-1" X 96'-1" = 7029.14 SQ. FT.
- 9. 24' X (73'-1" X 25'-0") = 3526.25 SQ. FT.

TOTAL AREA = 10,655.39 SQ. FT. (B)

COND. AREA OF SIX STORED BLOCK :-

- 10. (57'-0" X 152'-3") X 6 = 52714.62 SQ. FT. (C)

TOTAL COND. AREA ON ALL FLOORS :-

= (A) + (B) + (C)

= 10,997.41 + 10,655.39 + 52714.62

= 74,437.42 SQ. FT.

COND. AREA OF BASEMENT FLOOR :-

- 1. 30'-0" X 26'-3" = 787.50 SQ. FT.
- 2. 26'-3" X 134'-3" = 3524.06 SQ. FT.
- 3. 57'-6" X 26'-3" = 1515.93 SQ. FT.
- 4. 50'-3" X 26'-3" = 1319.06 SQ. FT.
- 5. 34'-3" X 26'-3" = 900.70 SQ. FT.
- 6. 38'-3" X 46'-6" = 1657.51 SQ. FT.
- 7. 41'-7" X 26'-3" = 1092.65 SQ. FT.
- 8. 73'-1" X 96'-1" = 7029.14 SQ. FT.
- 9. 73'-1" X 25'-0" = 1824.12 SQ. FT.
- 10. 48'-0" X 152'-3" = 7298.00 SQ. FT.

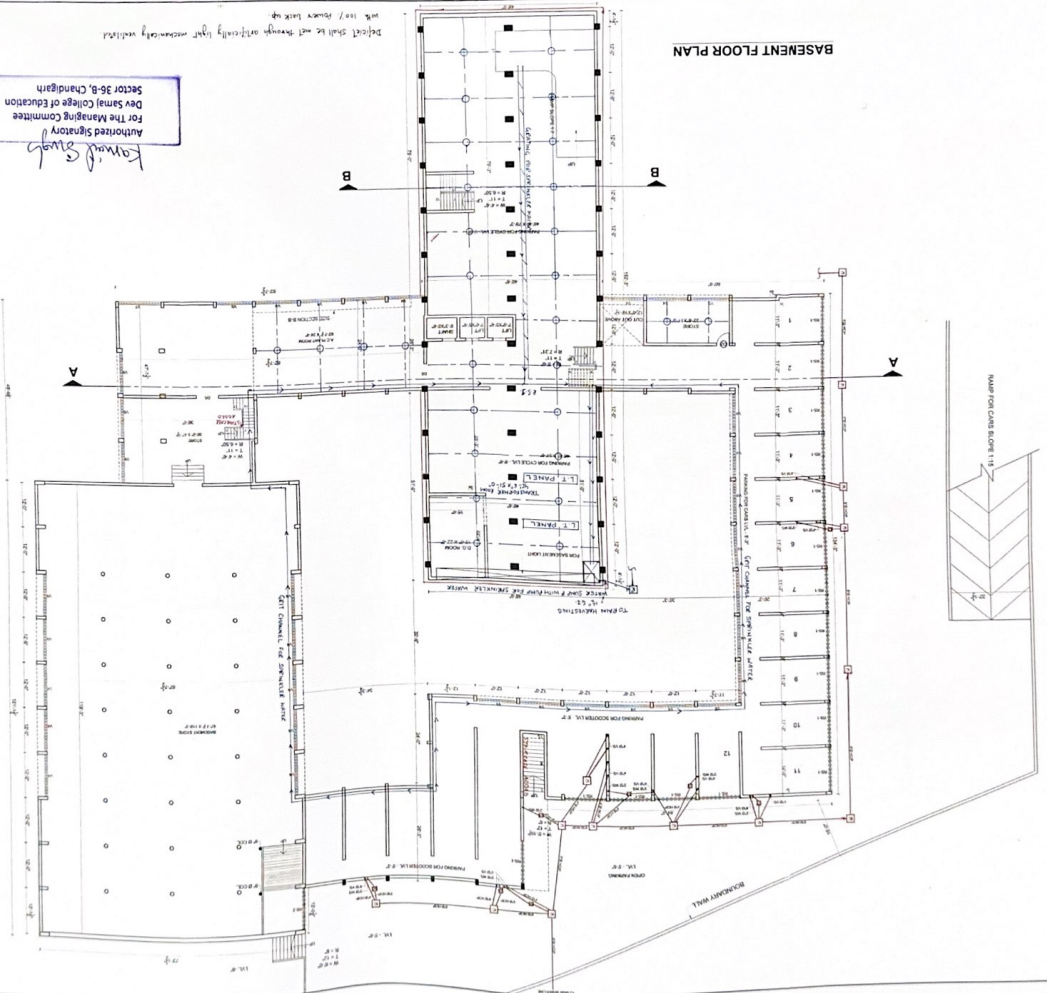
TOTAL AREA = 27,162.87 SQ. FT. (D)

Kavind Singh
Authorized Signatory
For The Managing Committee
Dev Samaj College of Education
Sector/ 36-B, Chandigarh

SHEET NO. 1		REVISED PLAN FOR DEV SAMAJ COLLEGE OF EDUCATION SECTOR 36 - B, CHANDIGARH RCE - 187	
CLIENT	<i>Salvatore Caldarola</i>	ARCHITECT	<i>Et. Raju Chugh E. S. CHUGH</i>
STRUCTURE ENGINEER		CHECKED BY	JOB NO.
TITLE	SITE PLAN	SCALE	DATE
THE CREATORS	architects, interior designers, planners, industrial designers, landscape architects, urban designers & valuers	DATE	APRIL 2009
S.C.O. 305-306, sector 35-B, Chandigarh	phone : 2602338 , 2681173		
Fax : 2681006			

BASEMENT FLOOR PLAN

Authorized Signatory
 For The Managing Committee
 Dev Samaj College of Education
 Sector 36-B, Chandigarh
Kamraj Singh



THE CRATIONS
 ARCHITECTS, INTERIORS DESIGNERS, PLANNERS,
 INDUSTRIAL DESIGNERS, LANDSCAPE ARCHITECTS,
 INTERIOR DESIGNERS & ARTISTS.
 S.C.O. 205-206, MEERUT 35-B, CHANDIGARH
 PHONE: 2622238, 2661173
 FAX: 2661006

BASEMENT FLOOR PLAN

DATE: 01.08.2008
 SCALE: 1/8" = 1'-0"
 SHEET NO. 2

PROJECT: STRUCTURE ENGINEER
 CHECKED BY: JOB NO.
 DRAWN BY: B. Raju Gouth
 DATE: 01.08.2008

CLIENT: *Shri. S. S. (Chandigarh)*

REVISIONS:

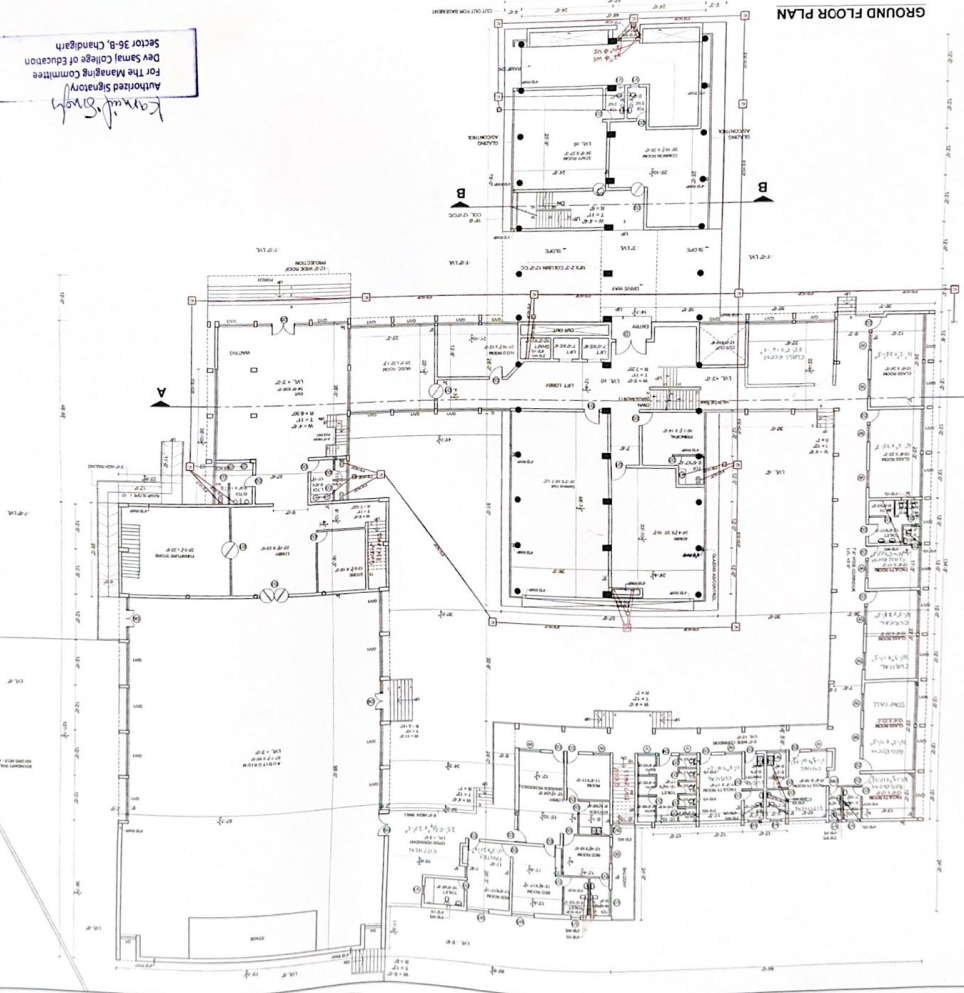
1. FLOOR SERVICES SHOWN AS PER N.C.D.
2. CHECK ROOMS NUMBER.
3. FLOOR SERVICE SHALL BE WITH ACCESSORIES.
4. FLOOR SERVICE SHALL BE WITH ACCESSORIES.
5. FLOOR SERVICE SHALL BE WITH ACCESSORIES.
6. FLOOR SERVICE SHALL BE WITH ACCESSORIES.
7. FLOOR SERVICE SHALL BE WITH ACCESSORIES.
8. FLOOR SERVICE SHALL BE WITH ACCESSORIES.
9. FLOOR SERVICE SHALL BE WITH ACCESSORIES.
10. FLOOR SERVICE SHALL BE WITH ACCESSORIES.
11. FLOOR SERVICE SHALL BE WITH ACCESSORIES.
12. FLOOR SERVICE SHALL BE WITH ACCESSORIES.
13. FLOOR SERVICE SHALL BE WITH ACCESSORIES.
14. FLOOR SERVICE SHALL BE WITH ACCESSORIES.
15. FLOOR SERVICE SHALL BE WITH ACCESSORIES.
16. FLOOR SERVICE SHALL BE WITH ACCESSORIES.
17. FLOOR SERVICE SHALL BE WITH ACCESSORIES.
18. FLOOR SERVICE SHALL BE WITH ACCESSORIES.
19. FLOOR SERVICE SHALL BE WITH ACCESSORIES.
20. FLOOR SERVICE SHALL BE WITH ACCESSORIES.

CONC. AREA OF BASEMENT FLOOR:

RCE - 187
 SECTION 36-B, CHANDIGARH.
 EDUCATION
 DEV SAMAJ COLLEGE OF
 REVISD PLAN FOR
 SHEET NO. 2

GROUND FLOOR PLAN

Authorized Signatory
 For The Managing Committee
 Dev Samaj College of Education
 Sector 36-B, Chandigarh
Kayash Singh



CLIENT		ARCHITECT		SHEET NO.		SCALE		DATE	
S. C. 305-306, Sector 35-B, Chandigarh		M. P. S. S. S. S.		18		1/4" = 1'-0"		APRIL 2008	
S. C. 305-306, Sector 35-B, Chandigarh		M. P. S. S. S. S.		18		1/4" = 1'-0"		APRIL 2008	
S. C. 305-306, Sector 35-B, Chandigarh		M. P. S. S. S. S.		18		1/4" = 1'-0"		APRIL 2008	

THE CREATIONS
 ARCHITECTS, INTERIOR DESIGNERS, PLANNERS,
 URBAN DESIGNERS & VISUALISERS
 18, Sector 35-B, Chandigarh
 Ph: 98150-10000

S.NO.	ROOM	AREA
01	OFFICE	11.00
02	OFFICE	11.00
03	OFFICE	11.00
04	OFFICE	11.00
05	OFFICE	11.00
06	OFFICE	11.00
07	OFFICE	11.00
08	OFFICE	11.00
09	OFFICE	11.00
10	OFFICE	11.00
11	OFFICE	11.00
12	OFFICE	11.00
13	OFFICE	11.00
14	OFFICE	11.00
15	OFFICE	11.00
16	OFFICE	11.00
17	OFFICE	11.00
18	OFFICE	11.00
19	OFFICE	11.00
20	OFFICE	11.00
21	OFFICE	11.00
22	OFFICE	11.00
23	OFFICE	11.00
24	OFFICE	11.00
25	OFFICE	11.00
26	OFFICE	11.00
27	OFFICE	11.00
28	OFFICE	11.00
29	OFFICE	11.00
30	OFFICE	11.00
31	OFFICE	11.00
32	OFFICE	11.00
33	OFFICE	11.00
34	OFFICE	11.00
35	OFFICE	11.00
36	OFFICE	11.00
37	OFFICE	11.00
38	OFFICE	11.00
39	OFFICE	11.00
40	OFFICE	11.00
41	OFFICE	11.00
42	OFFICE	11.00
43	OFFICE	11.00
44	OFFICE	11.00
45	OFFICE	11.00
46	OFFICE	11.00
47	OFFICE	11.00
48	OFFICE	11.00
49	OFFICE	11.00
50	OFFICE	11.00
51	OFFICE	11.00
52	OFFICE	11.00
53	OFFICE	11.00
54	OFFICE	11.00
55	OFFICE	11.00
56	OFFICE	11.00
57	OFFICE	11.00
58	OFFICE	11.00
59	OFFICE	11.00
60	OFFICE	11.00
61	OFFICE	11.00
62	OFFICE	11.00
63	OFFICE	11.00
64	OFFICE	11.00
65	OFFICE	11.00
66	OFFICE	11.00
67	OFFICE	11.00
68	OFFICE	11.00
69	OFFICE	11.00
70	OFFICE	11.00
71	OFFICE	11.00
72	OFFICE	11.00
73	OFFICE	11.00
74	OFFICE	11.00
75	OFFICE	11.00
76	OFFICE	11.00
77	OFFICE	11.00
78	OFFICE	11.00
79	OFFICE	11.00
80	OFFICE	11.00
81	OFFICE	11.00
82	OFFICE	11.00
83	OFFICE	11.00
84	OFFICE	11.00
85	OFFICE	11.00
86	OFFICE	11.00
87	OFFICE	11.00
88	OFFICE	11.00
89	OFFICE	11.00
90	OFFICE	11.00
91	OFFICE	11.00
92	OFFICE	11.00
93	OFFICE	11.00
94	OFFICE	11.00
95	OFFICE	11.00
96	OFFICE	11.00
97	OFFICE	11.00
98	OFFICE	11.00
99	OFFICE	11.00
100	OFFICE	11.00

REVISION PLAN FOR
 DEV SAMAJ COLLEGE OF
 EDUCATION
 SECTOR 36 - B, CHANDIGARH
 RCE - 187

SHEET NO. 4

REVISED PLAN FOR
DEV SAMAJI COLLEGE OF
EDUCATION
SECTOR 36-B, CHANDIGARH,
RCE -187

GENERAL NOTES :-
1. DATE & BOUNDARY WALL SHOULD BE AS PER ZONING.
2. GREEN SHOULD BE AS STD. DESIGN - ALL G.T. 4/19/17
3. ALL I.C. & 2/4/17
4. ALL I.C. 1/17 = 2/4/17
5. NO PORE CE FRET IN FRONT OF MAIN GATE
6. ALL W.P. & G.I. PIPES SHALL PASSING THROUGH BEAMS & SLABS SHALL HAVE STEEL PIPES RIGID
7. OWNER SHALL BE RESPONSIBLE FOR THE PARTY WALLS AS STRUCTURE.
8. TOP OF WATER MAIN CONDUIT SHALL BE KEPT 6" ABOVE FINISH CONCRETE SLAB.
9. LAST IC SHALL BE CONNECTED TO MAIN SEWER IN ACCORDANCE WITH PLAN OF MAIN SEWER OF THE DEVELOPMENT.

ELECTRICAL NOTE :-
TYPICAL ELECTRICAL LOADS = 60 K.V.

NOTIONED
B
1/17

CLIENT

Signature
(Chairperson)

ARCHITECT

Signature
El. Raju Singh
R.C. Tandon

STRUCTURE ENGINEER

SHEET NO.	CHECKED BY	JOB NO.
DATE	DATE	DATE
SCALE	DATE	DATE

TITLE

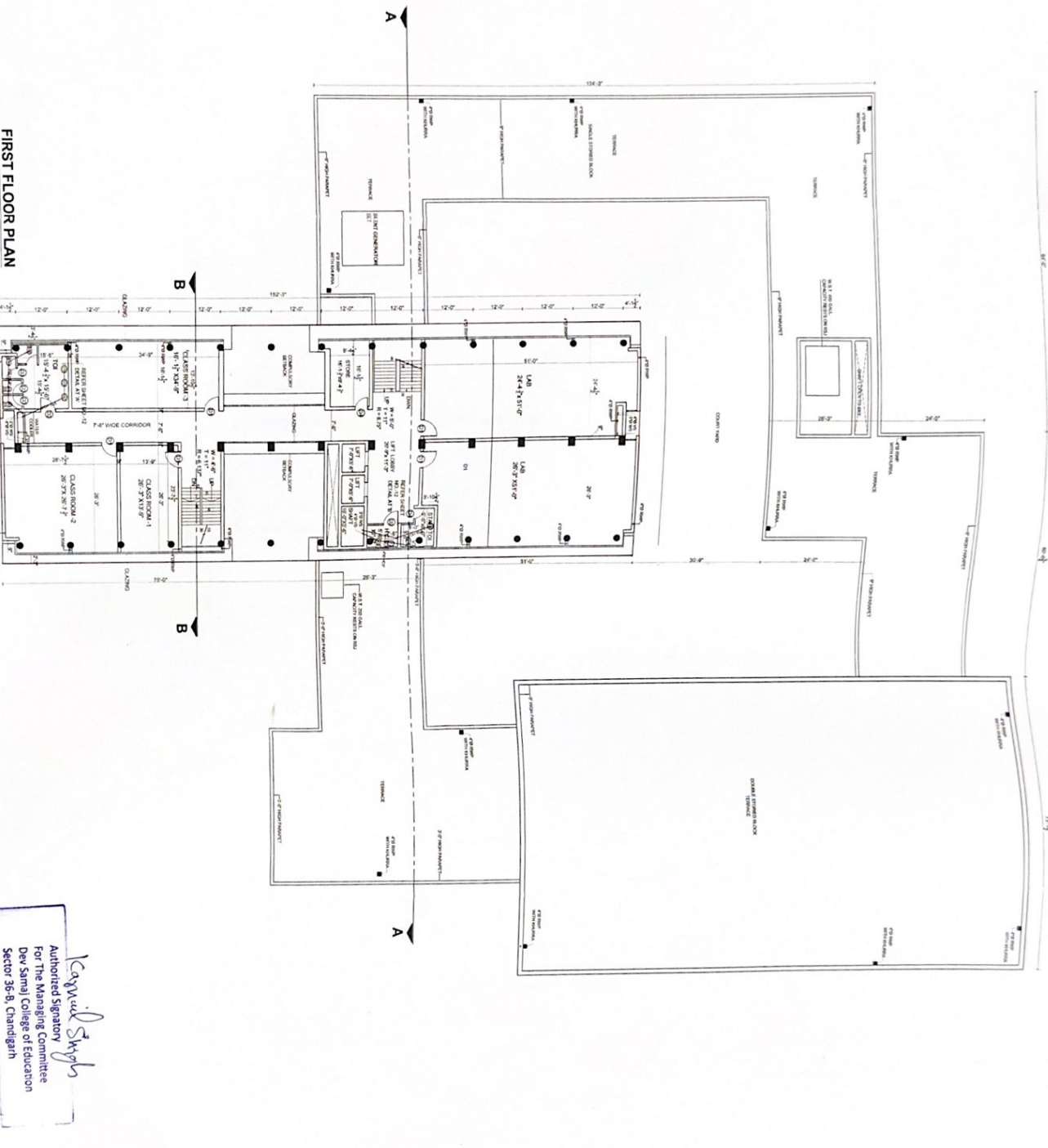
FIRST FLOOR PLAN

THE CREATORS

architects interior designers planners,
urban designers & villaes

S.O. 305,306,sector 35-B, Chandigarh
PHONE: 2602038, 2661173
FAX: 2661006

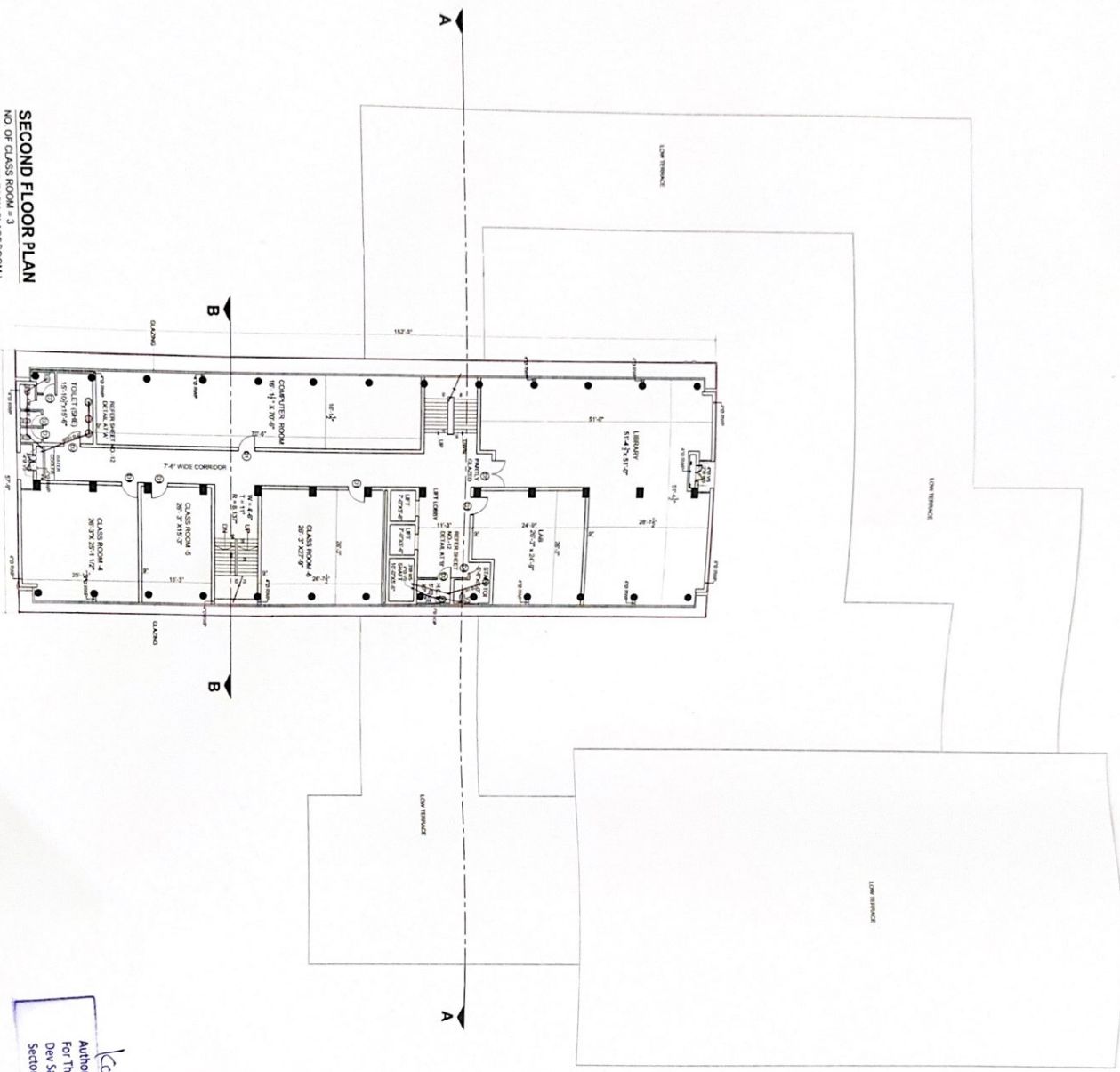
Kayvild Singh
Authorized Signatory
For The Managing Committee
Dev Samaji College of Education
Sector 36-B, Chandigarh



FIRST FLOOR PLAN

NO OF CLASS ROOM = 3
NO OF STUDENTS EACH CLASS ROOM
OUTER FACADE SHALL BE KEPT AS ARCHITECTURE CONTROL SHEET

SECOND FLOOR PLAN
 NO. OF CLASS ROOM = 3
 (25 STUDENTS EACH CLASS ROOM)



Karnail Singh
 Authorized Signatory
 For The Managing Committee
 Dev Samaj College of Education
 Sector 36-B, Chandigarh

SHEET NO. 5

REVISED PLAN FOR
 DEV SAMAJ COLLEGE OF
 EDUCATION
 SECTOR 36-B, CHANDIGARH
 RCE-187

STRUCTURE NOTES:-
 1. STRUCTURAL BEHAVIOUR INCLUDING
 AND CONSTRUCTION CONTROL TO BE
 2. EXISTING STRUCTURE HAS BEEN FOUND
 TO BE IN SAFE AND SOUND CONDITION
 AND ALL THE LOADS AND DIMENSIONS THE
 LOADS HAVE BEEN TAKEN INTO ACCOUNT
 WHILE CHECKING OUT / CHECKING THE
 DESIGN OF THE BUILDING.
 3. STRUCTURE DESIGN AND DETAILS
 HAVE BEEN CHECKED FOR SEISMIC LOAD
 AS PER IS-1893-2002, IS-1893 AND
 IS USED (MOST) THE BEAMS LEVEL AND
 NECESSARILY STRENGTHENING SHALL BE MADE
 WHEREVER REQUIRED AS PER THE CODE
 PROVISION.
 4. REMEDIATION FOR THE SAFETY OF
 THE BUILDING AND REPAIRING STRUCTURE
 FOR DESIGN AND EXECUTION STRUCTURE
 ENGINEER AND THE CONTRACTOR.

APPROVED
 10/04/2009
 10/04/2009

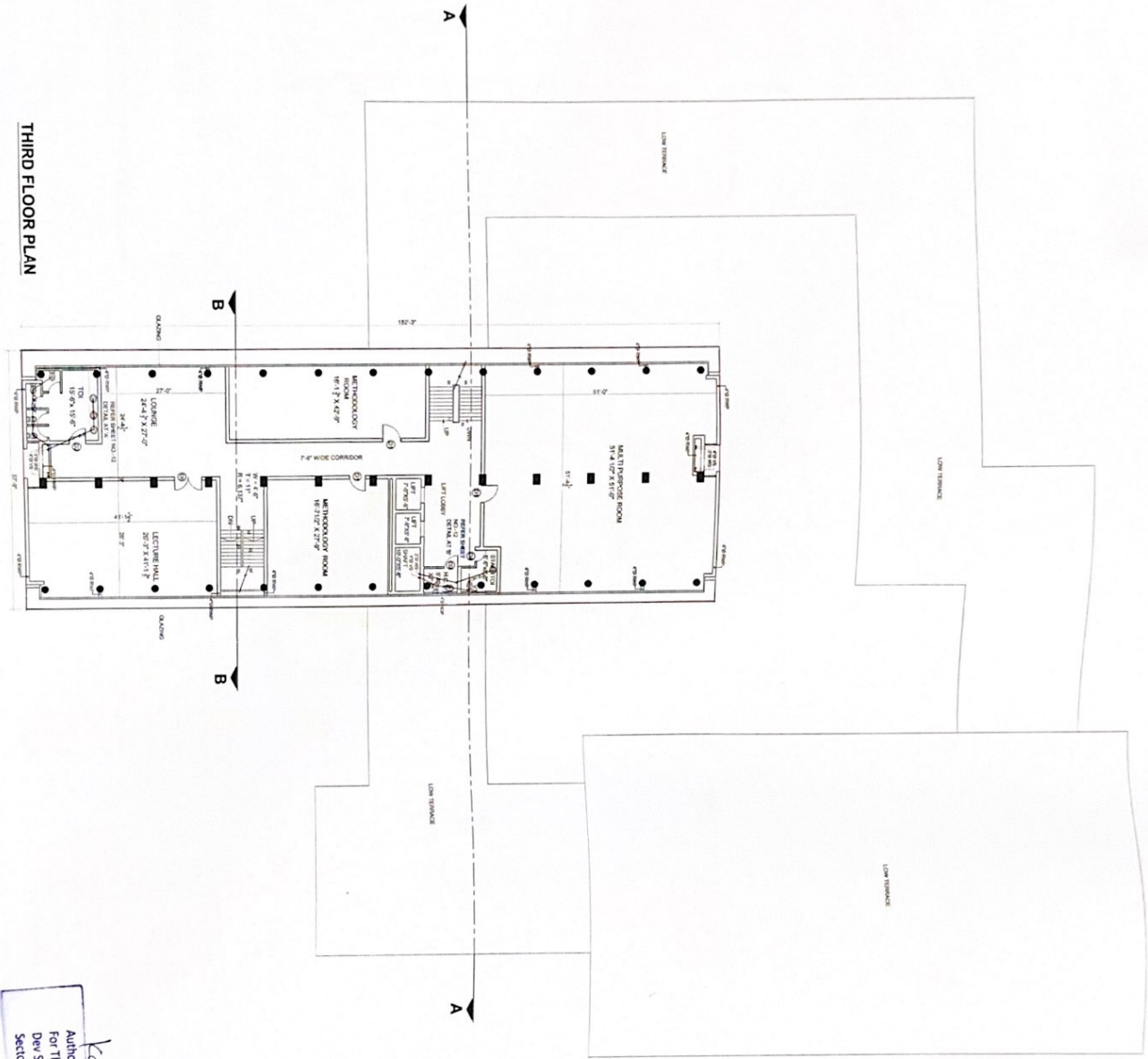
CLIENT
(Signature)

ARCHITECT
 CHECKED BY: *(Signature)*
 DATE: APRIL 2009

STRUCTURE ENGINEER
 CHECKED BY: *(Signature)*
 DATE: APRIL 2009

TITLE:-
 SECOND FLOOR PLAN
THE CREATORS
 Industrial designers, landscape architects,
 urban designers & planners
 S.C.O. 305-306, Sector 35-B, Chandigarh
 Phone: 2602238, 2681173
 Fax: 2681006

THIRD FLOOR PLAN



Kavul Singh
 Authorized Signatory
 For The Managing Committee
 Dev Samaj College of Education
 Sector 36-B, Chandigarh

SHEET NO. 6
 REVISED PLAN FOR
 DEV SAMAJ COLLEGE OF
 EDUCATION
 SECTOR 36-B, CHANDIGARH
 RCE -187

Checked
Signature
 DATE

Schwartz
clerk

CLIENT
Signature
 E. Bhatia
 24.12.2009

ARCHITECT	STRUCTURE ENGINEER
SHEET NO.	CHECKED BY
DATE BY	SCALE
DATE	DATE
APRIL 2009	

THE CREATORS
 architects interior designers planners
 urban designers & valuers
 S.C.O. 305-306 sector 35-B Chandigarh
 Phone : 2622336, 2621173
 Fax : 2621008

SHEET NO. 7

REVISED PLAN FOR
DEV SAMAJ COLLEGE OF
EDUCATION
SECTOR 36 - B, CHANDIGARH.
RCE - 187

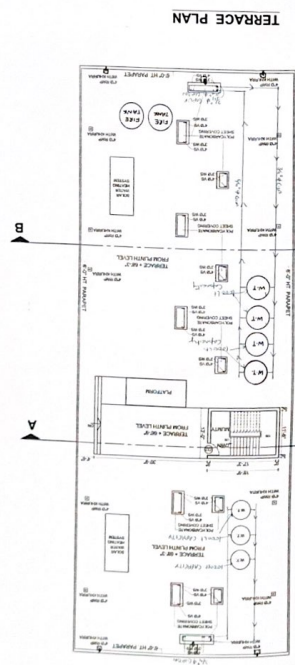
CLIENT: *Solaja Singh*
Chanderson

ARCHITECT: *S. Raju Singh*
STRUCTURE ENGINEER: *S. Raju Singh*

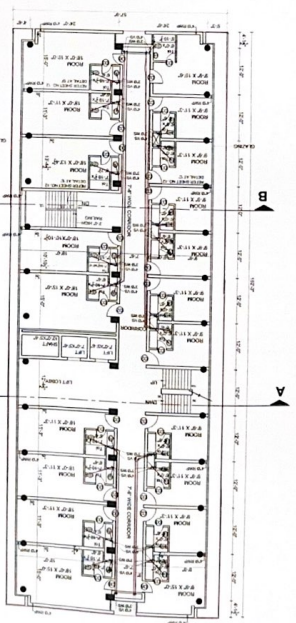
DATE: APRIL 2008

THE CREATORS
architects, interior designers, landscape architects,
urban designers & planners
S. C. O. 305-306, sector 35-B, Chandigarh
phone: 2622333, 2661173
fax: 2661008

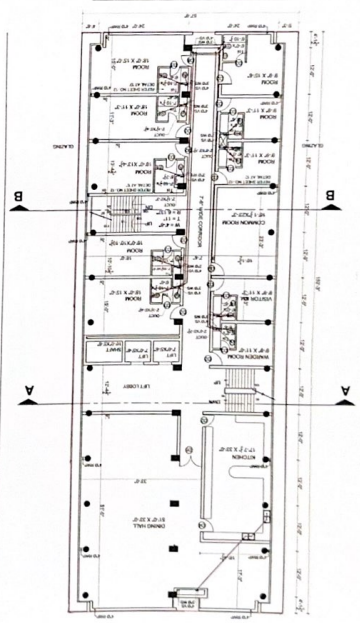
Authorized Signatory
For The Managing Committee
Dev Samaj College of Education
Sector 36-B, Chandigarh
Kamraj Singh



FIFTH FLOOR PLAN
(GIRLS HOSTEL)
NO. OF ROOM = 20
(2 STUDENTS EACH ROOM)
TOILETS ARE MECHANICALLY VENTILATED WITH 100% POWER
BACK UP AS PER NBC CODES.

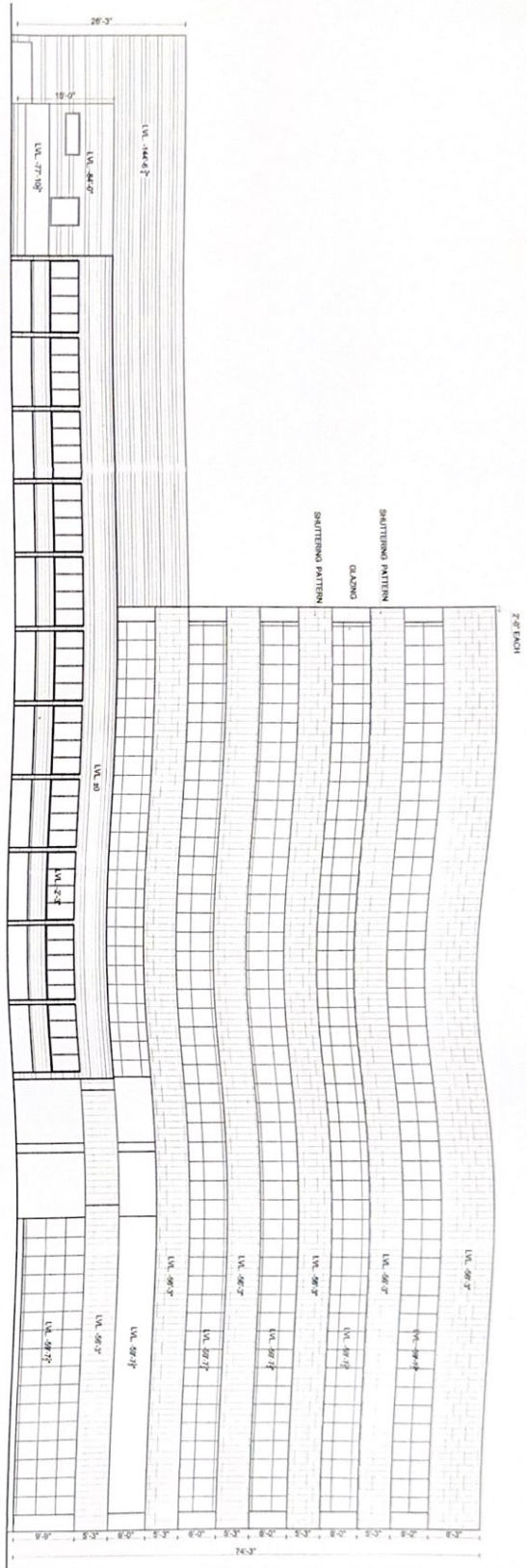


FOURTH FLOOR PLAN
(GIRLS HOSTEL)
NO. OF ROOM = 8
(2 STUDENTS EACH ROOM)
TOILETS ARE MECHANICALLY VENTILATED WITH 100% POWER
BACK UP AS PER NBC CODES.

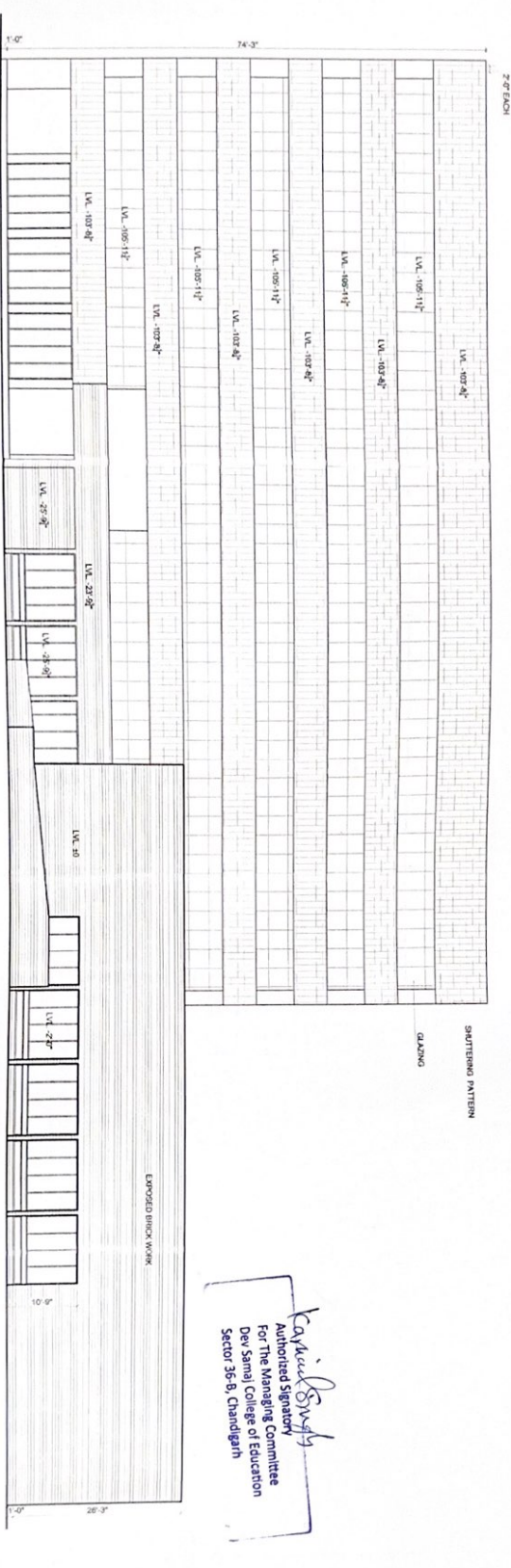


REVISED PLAN FOR
 DEV SAMAJ COLLEGE OF
 EDUCATION
 SECTOR 36 - B, CHANDIGARH,
 RCE -187

APPROVED
 [Signature]
 [Signature]



SOUTH ELEVATION



NORTH ELEVATION

Kavish Singh
 Authorized Signatory
 For The Managing Committee
 Dev Samaj College of Education
 Sector 36-B, Chandigarh

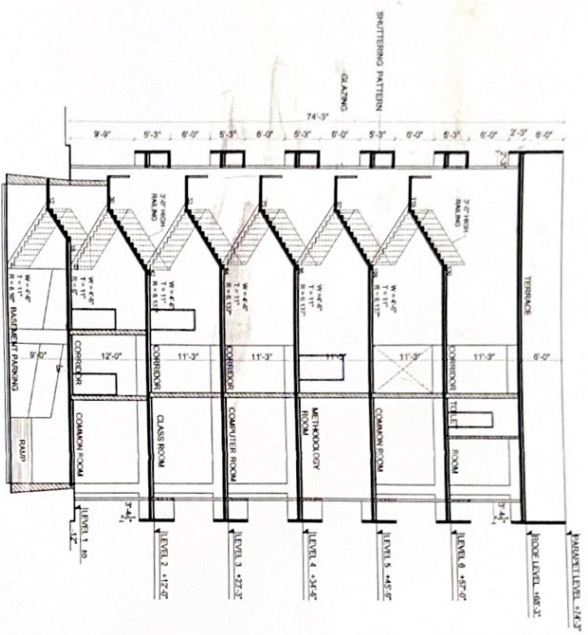
CLIENT
 [Signature]
 [Signature]
 El. Raju, Chandigarh

ARCHITECT	CHECKED BY	DATE
SHEET NO.	SCALE	DATE
GLAZING	1/8" = 1'-0"	APRIL, 2009

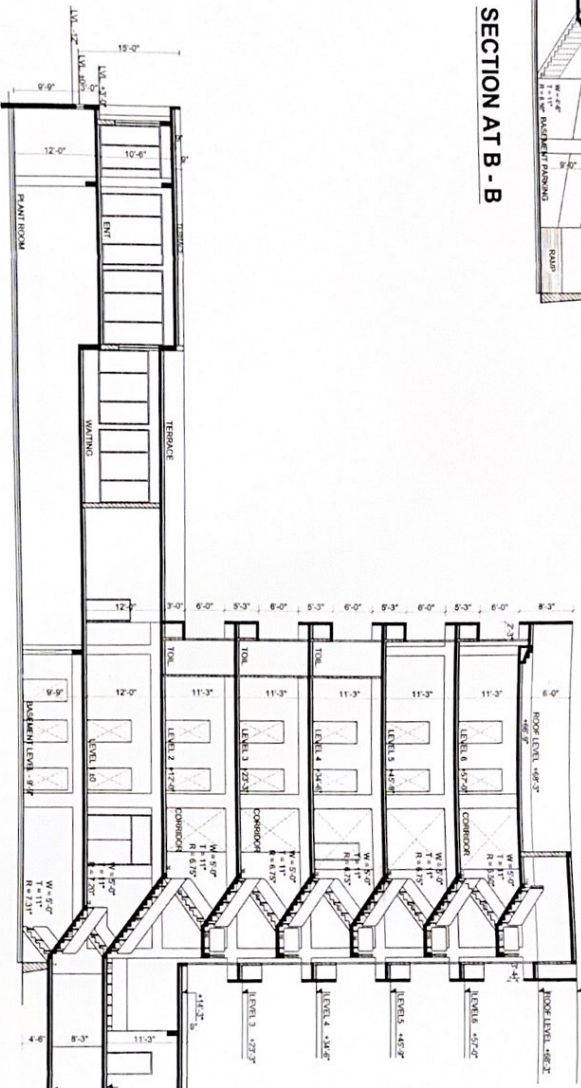
TITLE:
 SOUTH & NORTH ELEVATIONS

THE CREATORS
 architects interior designers planners,
 industrial designers landscape architects,
 urban designers & valuers
 S.O. 306-306 sector 35-B Chandigarh
 Phone : 2602238, 2661173
 Fax : 2661008

SHEET NO. 10
 REVISED PLAN FOR
 DEV SAMAJI COLLEGE OF
 EDUCATION
 SECTOR 36 - B, CHANDIGARH,
 RCE - 187



SECTION AT B - B



SECTION AT A - A

LaWard Studio
 Authorized Signatory
 For The Managing Committee
 Dev Samaj College of Education
 Sector 36-B, Chandigarh

APPROVED
 [Signature]

CLIENT	STRUCTURE ENGINEER
ARCHITECT	CHECKED BY
SHEET NO.	DATE
SCALE	APRIL 2009
1/8" = 1'-0"	
TITLE	SECTIONS

THE CREATORS
 industrial designers, planners,
 urban designers & writers
 S C O 305-306 sector 35-B Chandigarh
 phone 2802338, 2861173
 fax 2861008

REVISIONS
 11 SHEET NO. 11
 REVISED PLAN FOR
 DEV SAMAJ COLLEGE OF
 EDUCATION
 SECTOR 36-B, CHANDIGARH
 R/OE-157

Approved Signatory
 For The Managing Committee
 Sector 36-B, Chandigarh

CLIENT: *Samaj*
 (Chandigarh)

ARCHITECT: *El. Roy Choudhary*
 STRUCTURE ENGINEER

SHEET NO. CHECKED BY: *El. Roy Choudhary*
 DATE: APRIL 2008
 SCALE: 1/8" = 1'-0"
 DEALT BY:

THE CREATORS
 ARCHITECTS, INTERIORS DESIGNERS, ENGINEERS,
 INDUSTRIAL DESIGNERS, LANDSCAPE ARCHITECTS,
 URBAN DESIGNERS & PLANNERS
 S. O. 305-306, LANE NO. 35-B, CHANDIGARH
 PHONE: 2602238, 2661173
 FAX: 2661008

